

Our Members and Directors/Trustees

Mrs Gill Bladon – Member and Chair of Trustees



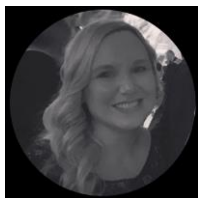
Gill has worked in primary and secondary education since 1976. From 1996 to 2014 Gill worked in a local government school improvement service where, in 2005, she became the Senior Inspector for Primary Curriculum Innovation & Co-ordination. As part of her role she led on a number of strategies, managed a team of consultants and led on all matters relating to primary assessment. Gill is a Fellow of the Chartered Institute of Educational Assessors (FCIEA) and an accredited Chartered Educational Assessor (FCIEA/CEA), a member of the 'Association for Achievement and Improvement through Assessment' (AAIA) and an accredited 'School Improvement Partner' (SIP). Throughout her career Gill has worked extensively with schools to build leadership capacity, improve the quality of teaching, learning and assessment and the understanding and use of assessment data as seen in Analyse School Performance, Inspection Data Summary Report and Fischer Family Trust. In 2014 Gill became an independent Education Adviser and through a number of activities, continues to support schools in their pursuit of excellence. Gill is a school Governor at two other schools where, at one school, she is Chair of Governors.

Gill can be contacted the following ways:

Post: Gill Bladon, c/o SHINE Academies, Northwood Park, Collingwood Road, Bushbury, WV10 8DS
Telephone: 01902 558715
Email: GBladon@shineacademies.co.uk

Appointed: 1st April 2016, reappointed 1st April 2020

Miss Caroline Coultham – Member



Caroline has worked in Retail, predominantly at Homebase since 2008. She is currently employed as a Merchandising Manager, with responsibility for a £400m turnover and a large team. Caroline has extensive experience in leadership and budget management and a wide range of transferable skills. Caroline joined SHINE Academies in December 2018 as she believed in the vision and direction of the Trust and is committed to ensuring the children within each school receive the very best start.

Appointed: 10th December 2018

Mrs Caroline Nightingale – Member and Trustee



Caroline has over 30 years experience in the NHS having started her career as a Biomedical Scientist, progressing through to managing Education and Training for the non-medical workforce at local level, to her current role in Leadership and OD at a regional level. Caroline brings with her a wealth of skills and experience from business, finance and project management, governance and education training delivery and management, through to strategic planning, critical thinking, facilitation and stakeholder engagement. Caroline is an experienced Governor, having been a

Governor, Vice-Chair and Chair in schools in Wolverhampton for nearly 20 years. Caroline is passionate about education and supporting the children across our academy to SHINE and ensure that they receive high quality education throughout their primary years.

Appointed: 16th September 2019 (Member) 10th June 2020 (Trustee)

Mr Gavin Hawkins – Member



Prior to co-founding my own company in 2018; specialising in educational technology, online safety and school improvement, Gavin worked in Wolverhampton schools for 18 years as a teacher, subject specialist and senior leader.

In 2008 Gavin was seconded to the Local Authority to support schools in their adoption and implementation of education technologies and became Head of the Learning Technologies Team in 2011. During his career, Gavin has worked with many schools, both in the UK and internationally, which has provided him with valuable insights into leadership and management styles, teaching and learning, curriculum design and assessment. Gavin has had the opportunity to work with the UK Department of Education and the Governments of Wales, Australia, and Kuwait to design curriculum opportunities and professional development for teachers.

Gavin has an MA in Education, holds the National Professional Qualification for Headteachers and is a Fellow of the Royal Geographical Society. Gavin is a Trust Board Member of a local Academy Trust and a Co-opted governor of a Wolverhampton maintained school.

Appointed: 16th March 2021

Mrs Gill Morris – Trustee (Chief Executive Officer)



Gill started her career as an NQT in 1982 at Villiers Primary School, progressing to Deputy Head Teacher, achieving Outstanding Ofsted ratings during her tenure. Gill achieved NPQH in 2004 and progressed to Headship at Northwood Park Primary School later that year which at the time, was one of the poorest performing schools in Wolverhampton. The School quickly gained recognition as a 'Good' school and has remained so since. During this time, the School secured an excellent reputation within the City and has been oversubscribed for many years. Gill led the school through academisation in 2015 in order to gain more strategic direction and gained sponsor school status establishing a Multi Academy Trust in April 2015. Gill became a National Leader in Education (NLE) in 2017.

Appointed: 1st April 2016

Mr Gary Gentle – Trustee



Gary has been working in Primary education for the past 30 years. Having taught in three Local Authorities as well as four primary schools, Gary has built up an extensive background of experience both as a serving teacher and as a school leader. Gary has experience of working as a school governor in both Primary and Nursery Schools as well as serving on cross phase committees linked to School Sport and school leadership. Gary is a Director of ConnectEd, a Wolverhampton organisation with over 100 Schools, which serves to support school improvement. Alongside this, Gary is a Trustee of a local outdoor education centre and of a Bilston Church Charity organisation. Gary currently works in a local Wolverhampton Primary School where he has served as Head Teacher for the past 10 years.

Appointed: 3rd May 2017

Mrs Charlotte Pook – Trustee



Charlotte is the founder & director of two local Chartered Accountancy Practices within Wolverhampton. She has extensive knowledge regarding financials, budgeting, auditing and business strategy that she shares with the Trust at a strategic level. Charlotte's invaluable skills and experience add a further layer to the robust financial management of the budget management both at Trust and school level.

Appointed: 1st April 2016, reappointed 1st April 2020

Mrs Annette Wilkinson –Trustee



Annette has over 20 years business management experience within primary and secondary schools, leading on a number of major renovation and new build projects as well as specific responsibilities of finance, health and safety, human resources and facilities management. Annette is IOSH qualified and as a result, took on a new challenge in April 2018, working for Concept Education Services as the Business Development Manager. This new role consolidates Annette's experience and involves supporting schools and MAT's with their statutory compliance relating to buildings and site and visiting prospective schools/trusts to talk through and showcase our current service offer. She has a wealth of governance experience and is currently Health and Safety Governor for a Primary School in Walsall.

Appointed: 13th February 2019

Mr Keith Marshall – Trustee



Keith currently works for a Fortune 500, global management consultancy and professional services firm as a Senior Finance Manager. Keith has a wealth of experience in managing large scale projects, both in the UK and Overseas. Keith has an abundance of skills and experience from business, finance and project management, governance and leadership, through to strategic planning, critical thinking, facilitation and stakeholder engagement. He is able to effectively provide challenge and is committed to the outcomes of pupils and the wider communities.

Appointed: 8th June 2018

Mr David Hassell –Trustee



David is experienced in various aspects of advertising, marketing and communications gained working both in-house and in agencies, covering print buying and production management, the development and delivery of marketing strategies, social media, PR, exhibition organization and video animation. Having worked across many sectors within both the public and private sectors, he is highly experienced in the development of design briefs and specification outlines to third party suppliers ensuring cost effective solutions are provided whatever the requirement. As an Account Manager/Director, David has worked with large retail organizations, business to business, training and education based clients.

Voluntary experience includes sitting on the boards of Walsall Education Business Partnership, Walsall Education Challenge, the Special Educational Needs & Disability Board and Voluntary Centre Sandwell.

Appointed: 23rd January 2020



Ms Sunita Yardley-Patel - Trustee



Sunita has worked in governance since 2012, starting in the HE sector and moving into primary and secondary education in 2015. Sunita is currently Head of Governance for Ormiston Academies Trust and in this role, holds Company Secretary responsibility and drives improvement through the continuous development of the Trust's governance structures and training and management of key stakeholders. Further to school governance,

Sunita has experience in admissions, exclusions, safeguarding and complaints. Sunita is a governor at Ormiston SWB Academy has joined SHINE Academies Trust Board as a member of the Wolverhampton community to support local schools and enhance the education of our young people.

Sunita is also still involved in HE and is currently Vice-Chair of Aston Students' Union Trust Board and is a governance peer reviewer for the NUS.

Appointed: 4th February 2021